

# MONTHLY MEMBERSHIP PROGRESS REPORT

District 11 D2

Results as of: 9/30/2023

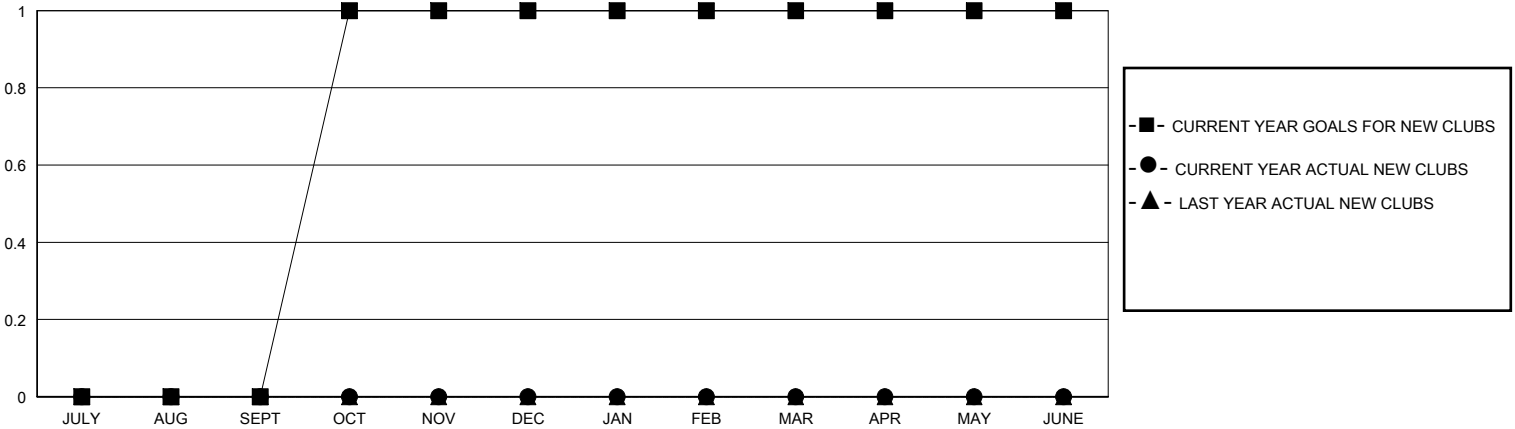
GMT:

LOCATION MICHIGAN

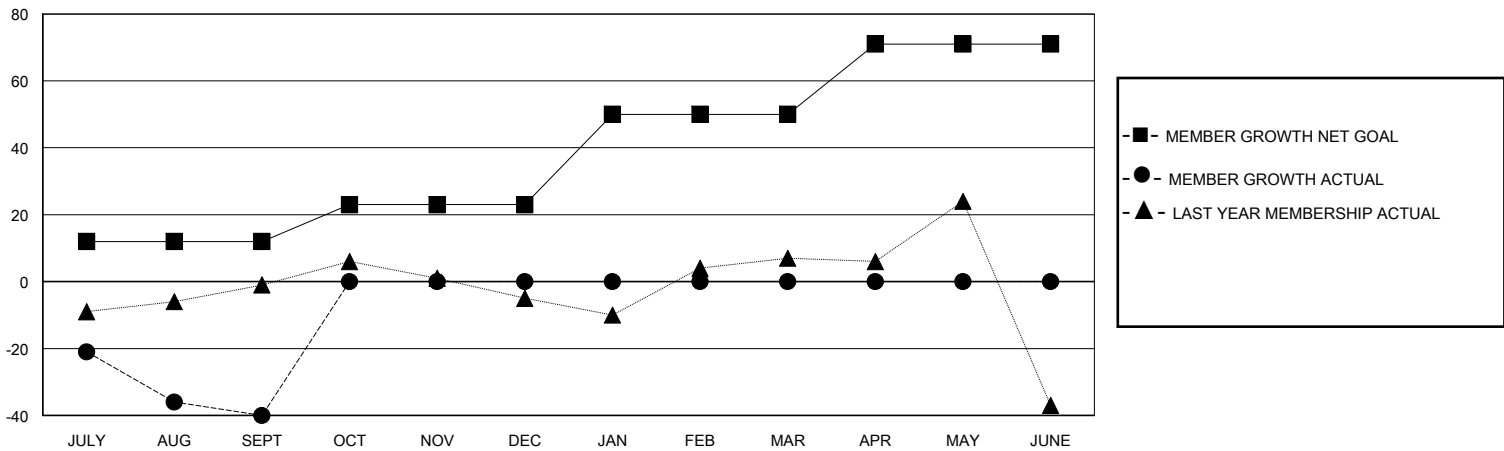
GMT CA

Clubs				Members			
RESULTS FOR 2023-2024				RESULTS FOR 2023-2024			
QUARTER	NEW CLUB GOAL	NEW CLUBS	DROPPED CLUBS	QUARTER	MEMBER GROWTH NET GOAL	MEMBER GROWTH ACTUAL	DROPPED MEMBERS ACTUAL (including transfers)
JULY/AUG/SEPT	0	0	0	JULY/AUG/SEPT	12	27	60
OCT/NOV/DEC	1	0	0	OCT/NOV/DEC	11	0	0
JAN/FEB/MAR	0	0	0	JAN/FEB/MAR	27	0	0
APR/MAY/JUNE	0	0	0	APR/MAY/JUNE	21	0	0

GOALS AND ACTUAL NEW CLUBS CUMULATIVE



GOALS AND ACTUAL MEMBERS CUMULATIVE



DROPPED CLUBS: 0	10 CLUBS OF 46 ADDED 1 OR MORE NEW MEMBERS	<b>GENDER DISTRIBUTION</b> MALE 878 (70.52%) FEMALE 366 (29.40%)
<b>DROPPED MEMBERS</b> DECEASED 6 CLUB CANCELLED 0 OTHER 54 TOTAL 60	<a href="#">CLICK HERE FOR CUMULATIVE MEMBERSHIP DATA</a>	TOTAL FAMILY UNIT MEMBERS 200 FAMILY MEMBERS PAYING HALF DUES 103